

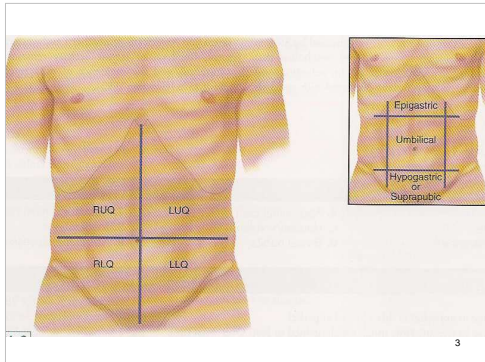
Abdomen & Peripheral Vascular System

1

Abdomen

- Anatomy
 - Diaphragm to pelvis
 - Abdominal muscles
 - Internal Organs
- Descriptive schemes
 - Four quadrants
 - Nine regions

2



3

History

- Appetite
- Dysphagia
- Abdominal Pain
- Nausea/Vomiting
- Bowel Habits
- Abdominal pain
- Nausea/Vomiting
- Bowel Habits

4

History

- Past abdominal history
- Medications
- Nutritional assessment
- Personal habits
 - Exercise, Smoking, Cigarettes

5

Abdominal Exam

- Inspection
- Auscultation
 - Arteries
 - Bowel Sounds
- Percussion
- Palpation
 - Light: tenderness
 - Deep: masses
 - Special: organs

6

Physical Exam

- Inspection
 - General shape
 - Scars
 - Veins
 - Hernias
- Common findings
 - Umbilical, ventral hernia
 - Piercings
 - Striae
 - Scars

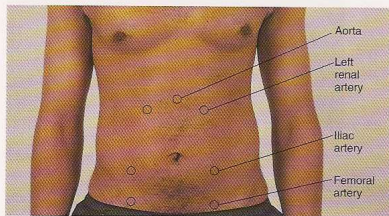
7

Striae



8

Auscultation



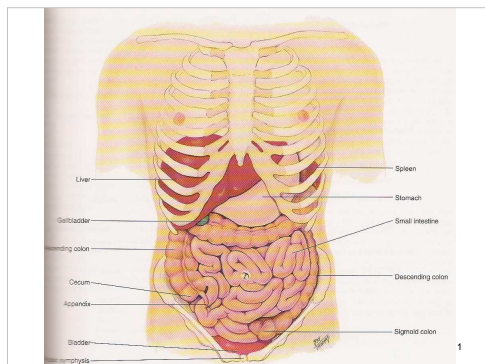
21-12

9

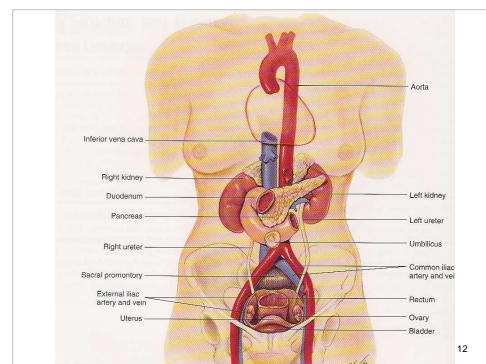
Abdomen

- Percussion
 - Liver size
 - CVA tenderness
- Palpation
 - Light
 - Deep
 - Special
 - Liver
 - Spleen
 - Kidney

10



11



12

Pain Tests

- Rebound Tenderness
- Inspiratory arrest (Murphy's sign)
- Iliopsoas
- Obturator

13

Rectum

- Inspection
 - Lesions
 - Rashes
 - Hemorrhoids
- Palpation
 - Digital rectal exam
 - Prostate if male
 - Sweep
 - Fecal occult blood
- No auscultation or percussion

14

Aging Adults

- Middle age – fat distribution
- Elderly
 - Decreased saliva
 - Esophageal emptying
 - Gastric acid decrease
 - Gallstones increase
 - Liver size and function decrease
 - Constipation

15

Pathological Findings

- Ascites
- Caput medusa
- Hepatomegaly
- Splenomegaly
- Ventral hernia
- Pain
 - Iliopsoas
 - Obturator

16

Portal Hypertension (Cirrhosis)

- Ascites
- Renal Insufficiency
- Encephalopathy
- Esophageal varices
- Caput Medusa
- Hemorrhage
- Leukopenia, thrombocytopenia, anemia
- Testicular atrophy, gynecomastia

17



18

